

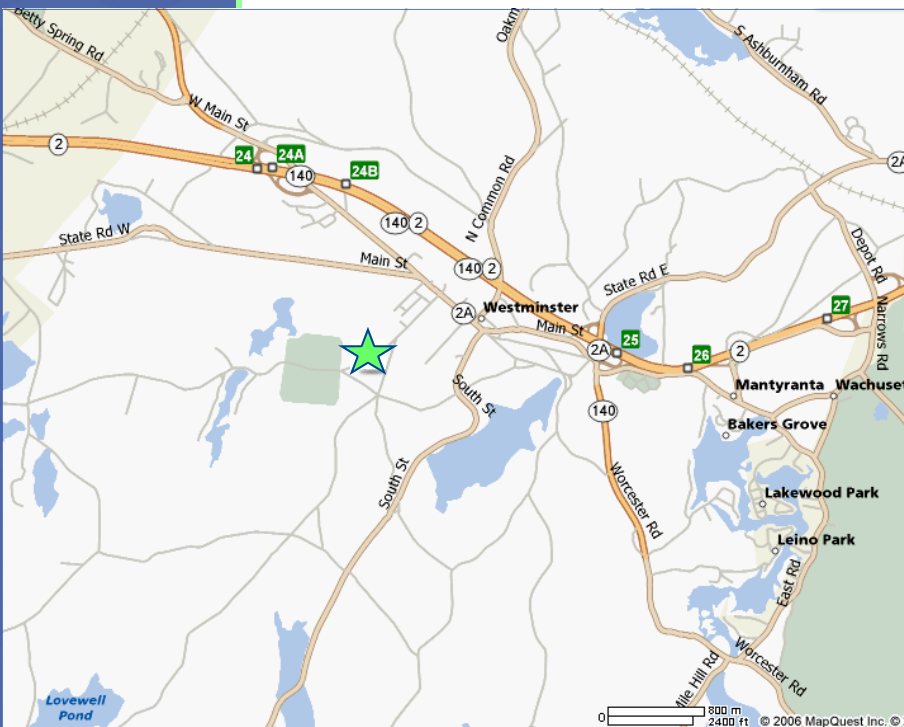
Owner Financing Available!

210 ACRES OF LAND FOR SALE ELLIS ROAD, WESTMINSTER, MA

\$4,200,000.00

- Fully permitted for 60 single family homes. Lot size: 60,000 sf.
- Fully permitted for 41 Detached Single Family Units - 55+
- Water, gas and septic.
- Road and infrastructure estimated at \$3.8 million.

Located near the
Westminster Country Club!



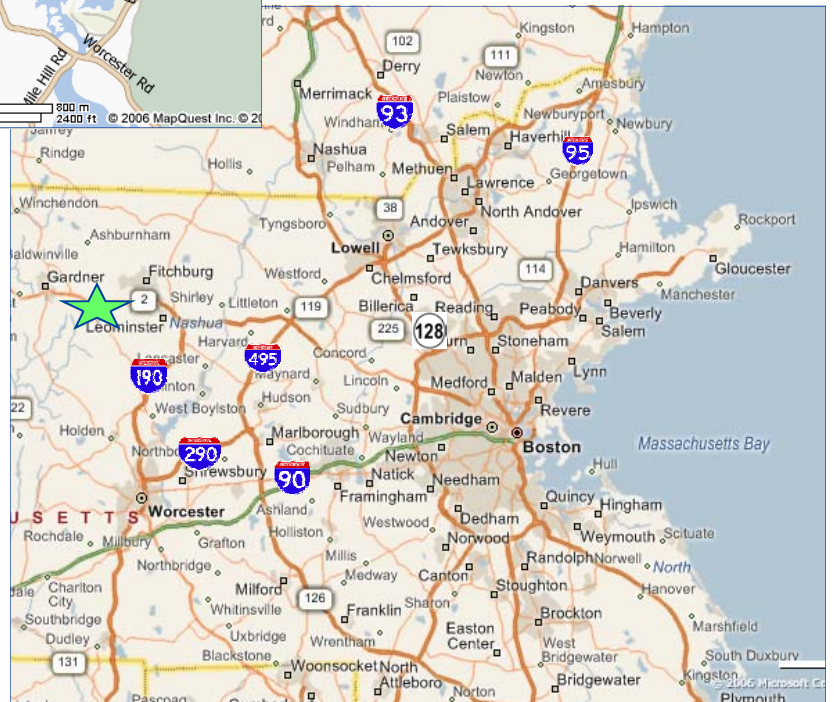
Road and infrastructure estimated at \$3.8 million.

- Roadwork - 10,000 feet
- Common septic system for 55+ with Pump Station
- Water tower

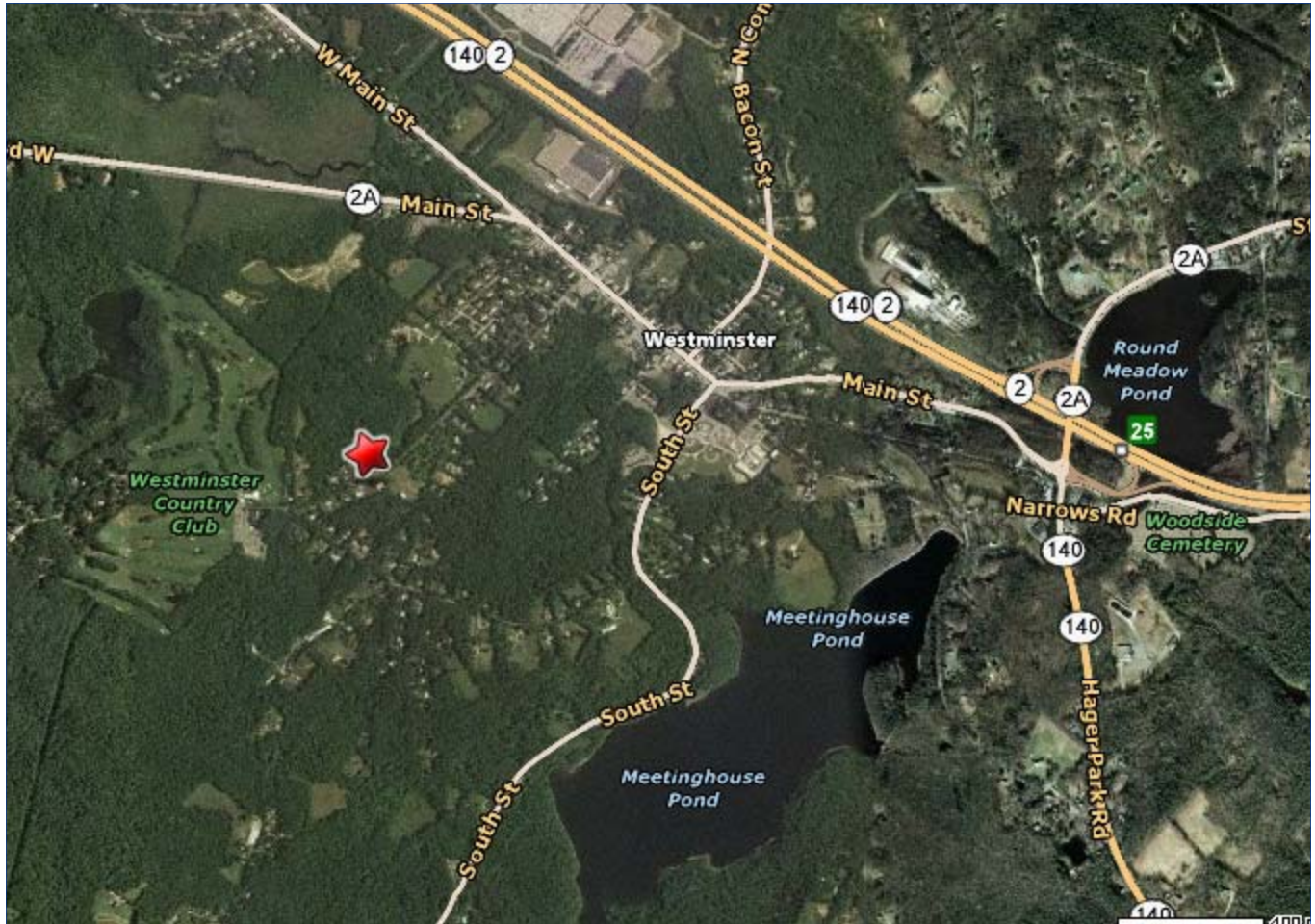
Robert E. Newis
Principal

9 Pokonoket Avenue • Sudbury • MA 01776

Office Phone & Fax 978.443.3737
Cell 617.281.3737
E-mail RNewis@NewisRealEstate.com
website www.newisrealestate.com



The above information is subject to errors, omissions, change of price or prior sale without notice.



Robert E. Newis
Principal

9 Pokonoket Avenue • Sudbury • MA 01776

Office Phone & Fax 978.443.3737
Cell 617.281.3737
E-mail RNewis@NewisRealEstate.com
website www.newisrealestate.com

The above information is subject to errors, omissions,
change of price or prior sale without notice.